

Directions to Pack Forest

Pack Forest
9010 453rd Street East
Eatonville, WA 98328
Telephone: 206.685.4485

For a map, please see Page 2

From the North

Alternative 1 (I-5 to I-405 -- Through Puyallup)

Take I-5 south. Exit to Highway 900 near Southcenter (Exit 157 from I-5). Transfer to Highway 167 (south) in Tukwila. Follow Highway 167 to Puyallup, and exit to Highway 161 (south). Follow Highway 161 (Meridian Street) past South Hill and Graham, and through Eatonville (approximately 28 miles). About 4 miles past Eatonville, you will get to the intersection with Highway 7; turn left. The entrance to Pack Forest will be on your left approximately 1/4 mile from the Highway 7 - Highway 161 junction.

Alternative 2 (I-5 to Highway 7 -- Through Tacoma)

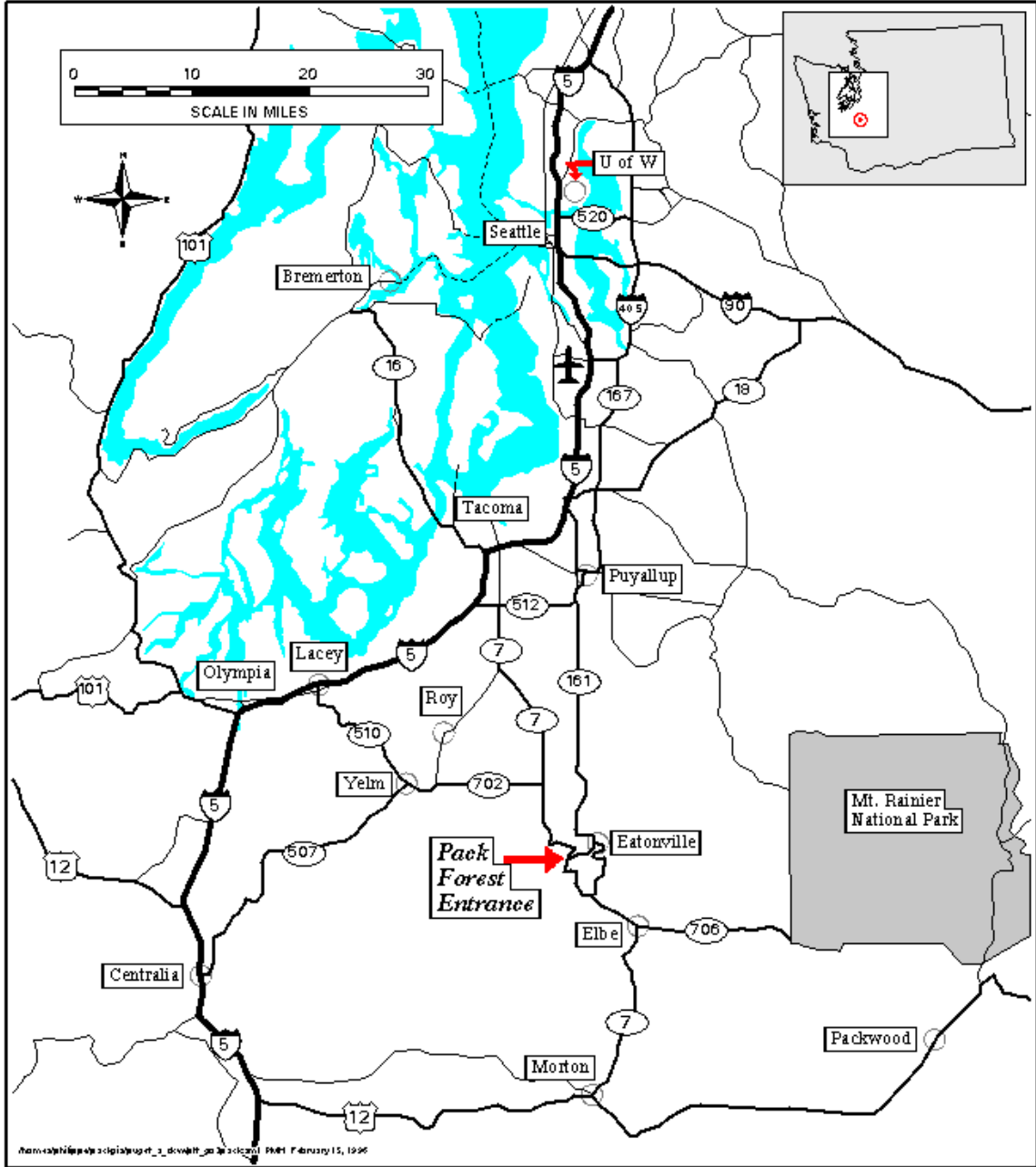
Follow I-5 south through Tacoma. Take Exit 127, and follow Highway 512 for about 2 miles, then transfer to Highway 7 (south -- follow the signs to Mt. Rainier). Continue for approximately 5 miles to the junction of Highway 507 and Highway 7. Keep to the left (Highway 7). Stay on Highway 7 for about 22 miles. Watch for the sign "University of Washington Pack Forest." The entrance to Pack Forest will be on your left.

From the South

Take I-5 North to US Route 12 (Exit 68, about 1 hour north of Longview). Go east, following US-12 through Morton. Turn left (north) on Highway 7. Follow Highway 7 through Elbe, Alder, and LaGrande. Approximately 1 mile north of LaGrande, you will see the entrance to Pack Forest on your right.

Parking

A large wooden sign marks the entrance to Pack Forest. Pass through the arch. Take the first right for conference parking. To park at the administrative and management offices, continue forward.



Non-spatial data: 2012/01/15 10:00 AM 15, 1996